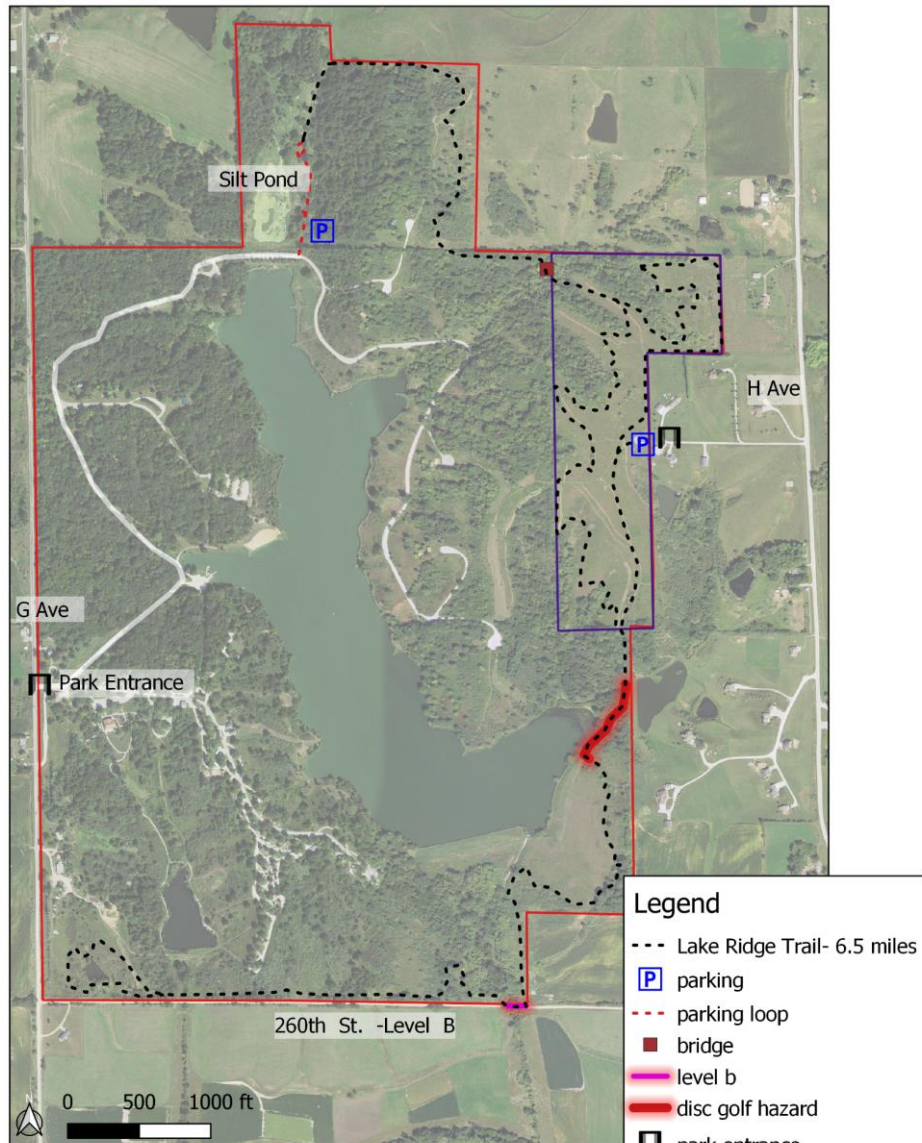


# Lake Ridge Equestrian Trail



## Legend

- Lake Ridge Trail- 6.5 miles
- parking
- parking loop
- bridge
- level b
- disc golf hazard
- park entrance
- PheasantRidgeWildlifeArea
- LakeIowaParkBoundary

Aerial Photography 2017

## Lake Ridge Equestrian Trail

- Ride at your own risk
- Trailheads are located in Lake Iowa Park, accessible from G Ave and Pheasant Ridge Wildlife Area, accessible from H Ave
- Day use only, no overnight camping
- Stay on designated trail
- No water hydrants available at this time
- Pack in pack out trash
- No dogs off leash in Lake Iowa Park
- Portions of trail shared with disc golfers and hikers
- Most of the trail is in open prairie, bring sunscreen and water
- Trail is open year-round, weather permitting
- Pheasant Ridge is open to public hunting
- Lake Iowa Park has an archery deer management hunt

Trail closings will be posted on [mycountyparks.com](http://mycountyparks.com), [iowacountyconservation.org](http://iowacountyconservation.org), Facebook, and at the trail heads

Office Number: 319-655-8465

Park After Hours: 319-529-9907

Questions or Comments email: [iowacountyconservation@gmail.com](mailto:iowacountyconservation@gmail.com)

